

Winter 2023 issue

SPH ALUMNI NEWSLETTER



In recent SPH news...

Looking for our next leader...

The OHSU-PSU School of Public Health is searching for our next leader! We seek a strategic and inspirational leader. The dean is the chief academic and administrative leader of the school. Working collaboratively with faculty and staff, the dean advances the school's mission to educate future public health leaders and advance public health scholarship and practice in collaboration with our communities to promote health and social equity.

Follow along on our Dean's Search webpage [here](#)

Opioid Overdose Risk is 10 Times Greater For Those Recently Released From Prison

Findings from OHSU, OSU underscore need for expanded, improved programming to protect people re-entering communities. People recently released from incarceration face a risk of opioid overdose 10 times greater than the general public, according to researchers at Oregon Health & Science University, Oregon State University and the Oregon Department of Corrections.

Read more about Dr. Elizabeth Waddell's research on the news site [here](#)



Dr. Lisa Marriott Receives NIH Award

Dr. Lisa K. Marriott, Ph.D., is Oregon's only recipient of the 2022 National Institutes of Health (NIH) award for Excellence in Diversity, Equity, Inclusion and Accessibility (DEIA) Mentorship. This award supplements her lab's ongoing work to enhance training for a diverse scientific workforce.

Marriott's work aims to help students who are interested in biomedical sciences see themselves as scientists and develop the persistence they'll need to succeed.

Read more on the news site [here](#)

**VANPORT
BUILDING**



alumni spotlight

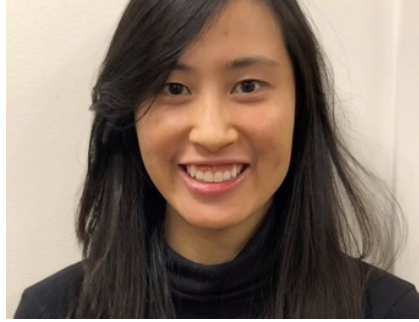


Taurica Salmon - MPH '21

Taurica Salmon, a recent Master's in Public Health in Epidemiology graduate, has overcome the hurdles of navigating an academic institution as a first generation student, to now find herself an APHA KP fellow that works in the Clackamas County office of Public Health.

With Salmon's passion and determination, paired with the supportive mentors the eye opening knowledge she gained in her graduate program, Salmon is empowered to be a leader, a change-maker in public health that supports social justice and health equity.

Read her full profile [here](#).



Jessica Tran - MPH '21

Jessica Tran, a recent graduate of the Master's in Public Health in Epidemiology program believes that access to healthcare is a human right. "Everybody should have the right to access proper healthcare," said Tran.

Tran moved to Atlanta, Georgia for her APHA KP fellowship, a city different from her home state because she felt it was important for her growth in the field of public health. She attributes her courage for this new experience as possible because she has the support of her mentors, co-workers, family and friends.

Read her full profile [here](#).

Public Health Practice Team hosts upcoming session at SLC

Since the beginning of the COVID-19 pandemic, SPH graduate students have worked alongside public health officials, supporting efforts to respond to the COVID-19 crisis and other public health threats in Oregon. More than 50 students have worked to date on more than 8 distinct teams, as part of the School of Public Health's Public Health Practice Team (PHPT).

Read more about the partnership between PHPT and the Oregon Health Authority.

The PHPT is hosting a Practicing Public Health in Oregon session at this year's annual Student Leadership Conference on April 4, 2023 at 5:00 pm. Join us for the panel discussion around this important topic and enjoy pizza on us!

Click [here](#) for more details



Annual Student Leadership Conference (SLC)

Tuesday, April 4, noon-6 p.m., at Smith Memorial Student Union at the downtown PSU campus, OHSU-PSU School of Public Health students will present their research and engage in lively discussions with colleagues, faculty and members of the community at the annual Student Leadership Conference (SLC).

Stop by to learn more about the work being conducted at the school, listen to keynote speaker Ryan Petteway, DrPH, M.P.H., and attend a Practicing Public Health in Oregon panel session. Tuesday, April 4, noon-6 p.m. Smith Memorial Student Union Rooms 294 and 296/8 1825 SW Broadway, Portland RSVP requested; not required

Click [here](#) for detailed presentation information; in previous years topics have ranged from various aspects of health equity and bias in medical training to micronutrient supplementation effects on ADHD, and incorporating community health workers into primary care-based COVID-19 outreach.

Dr. Ryan Petteway, the keynote speaker, recently appeared in an episode of PDXPLORES, discussing the research behind The People's Social Epi Project: PDX. Click [here](#) for more details.



upcoming events

Click the [underline](#) text to be redirected to our events page

SPH ONLINE CALENDAR

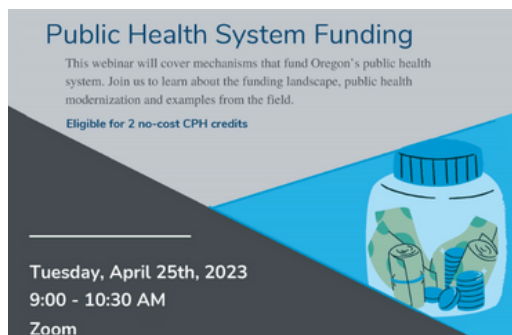
National Public Health week events

- OHA-PHD Disability Culture Event – Monday, April 3th
- Student Leadership Conference, with keynote speaker Dr. Ryan Petteway, student presentations and posters, and a public health practice session – Tuesday, April 4th
- OHA-PHD Public Health Professional Panel Event – Wednesday, April 5th
- OPHA Leadership Panel – Friday, April 7th



The OHSU-PSU School of Public Health and the Coalition of Local Health Officials (CHLO) are proud to present the [Public Health System Funding Webinar](#)

This webinar will cover mechanisms that fund Oregon's public health system. Join our guest speakers Danna Drum (OHA), Sara Beaudrault (OHA), Shane Sanderson (Linn County Public Health) and Laura Daily (CHLO) to learn about the funding landscape, public health modernization and examples from the field.



PSU Day of Giving - April 12, 2023

The OHSU-PSU School of Public Health Student Emergency fund provides students with flexible funds to ensure a financial setback does not mean the end of their academic goals. Your support will help students cover the cost of transportation, groceries, or childcare; or take care of other challenges that may arise.

In the OHSU-PSU School of Public Health (SPH) we have seen a sharp increase in student need for assistance with food, rent, childcare or medical bills. We need your help to support our students, many of whom face challenges associated with the rising cost of living.

Across campus, the need for student emergency funds has never been greater. The latest report on the impact of COVID-19 on PSU students revealed that more than 50% experienced food and housing insecurity in the last year.

Your generous donation will support over 90 students to continue their education during these difficult times! As we continue to navigate hardships associated with the most challenging public health crisis of our lifetimes, it's more important than ever to continue to support and celebrate public health. Click [here](#) to learn more and donate or share with your networks. Any assistance you can provide is greatly appreciated.



In recent SPH news...

Grant Makes Exploratory Trips to Vietnam and Hawaii Possible for PIAA Studies



Dr. Betty Izumi, Dr. Marie Lo (PSU's English Department), and Hau Hagedorn (PSU's Transportation Research and Education Center) received a \$100,000 grant from the Henry Luce Foundation to support place-based research and education that examines the intersections of U.S. imperialism in Southeast Asia, U.S. settler colonialism of the Pacific Islands and their impacts on the histories and experiences of Asian American and Pacific Islander communities in the greater Portland area.

Read more on the news site [here](#)

about this newsletter

At the OHSU-PSU School of Public Health, we'd like to stay in touch with you to celebrate your wins in life and follow your career path beyond your time with us.

Feel free to connect with us in these various social media channels, as well as email any updates you'd like to share to sphcomms@ohsu.edu



OHSU-PSU School of Public Health –
Vanport Building
1810 SW 5th Avenue,
Suite 510
Portland, OR. 97201
Contact us [here](#)





GET YOUR SPH SWAG

IN TIME FOR
GRADUATION OR
CELEBRATE BEING
AN ALUMNI

SPH POP UP SHOP
OPENS APRIL 3 TO
APRIL 28, 2023

CHECK OUR
INSTAGRAM PAGE
FOR MORE DETAILS



SCHOOL OF
PUBLIC HEALTH